

LESOTHO HIGHLANDS WATER PROJECT PHASE II

PROGRESS UPDATE
CONSTRUCTION CONTRACT PACKAGES
INDICATIVE TIMELINES

More than 30 years of successful collaboration



CONTENTS

- Scope of Phase II
- Progress to Date
- Construction Contracts
- Timelines
- Tender Guidelines

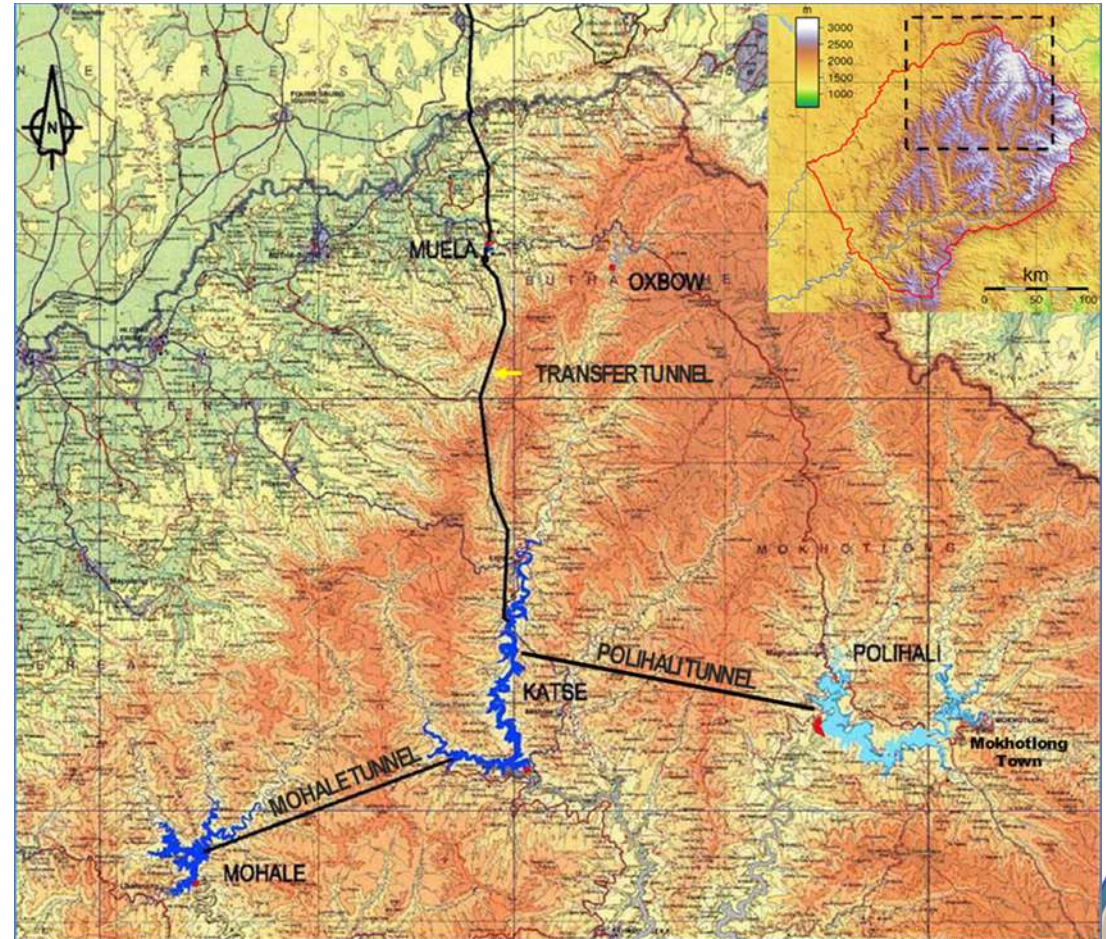


More than 30 years of successful collaboration

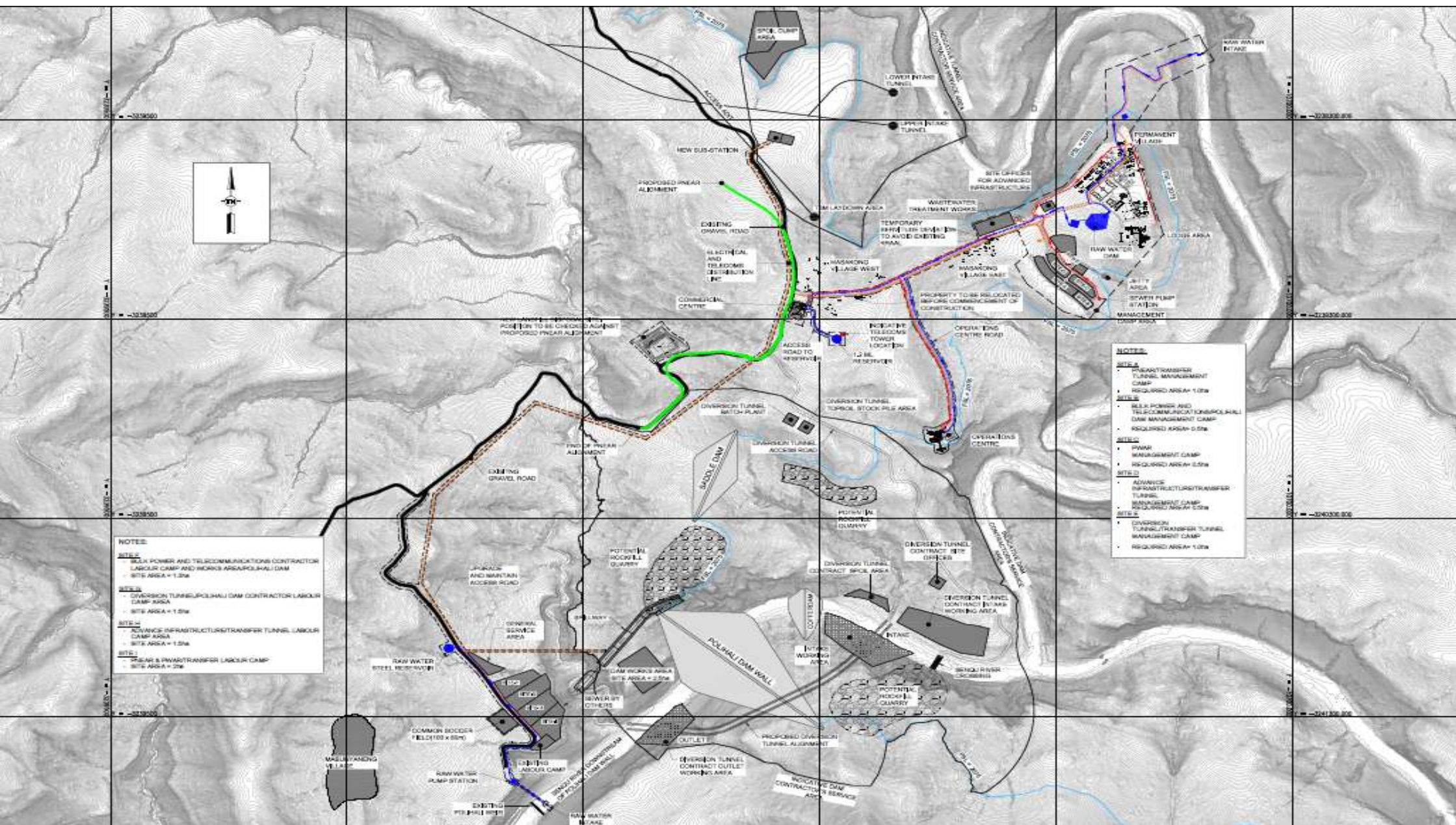


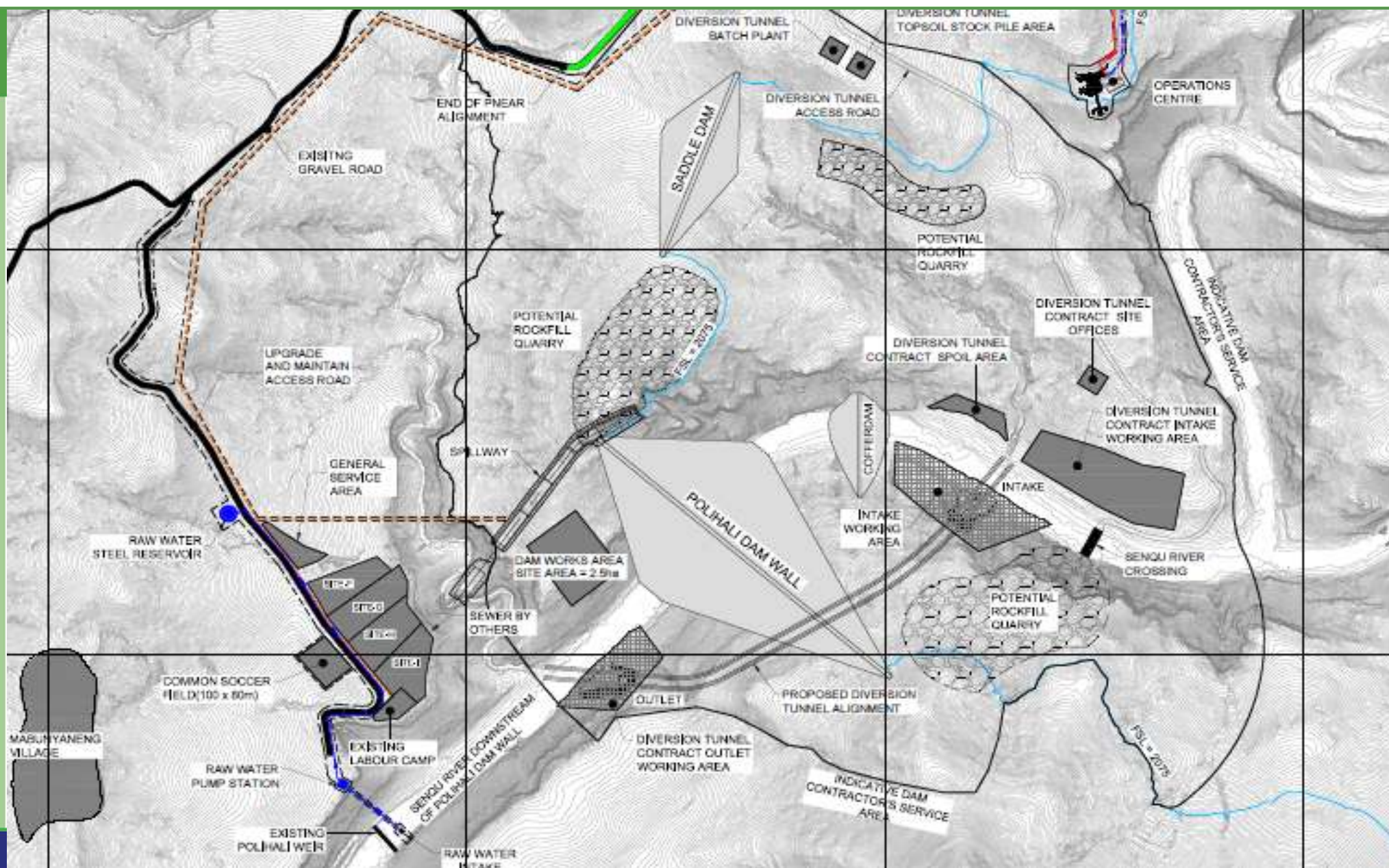
PHASE II SCOPE

- Water Transfer
 - Environmental, Social and Health Impact Studies and Action Plans
 - Advance Infrastructure
 - Polihali Dam
 - Transfer Tunnel
 - Feeder Roads and Bridges
 - Livelihood Restoration
- Hydropower Generation



More than 30 years of successful collaboration





PROGRESS TO DATE

- Procurement commenced April 2014
- Community Consultations
- Reservoir Demarcation
- Asset Registration commenced
- Geotechnical Investigation – Stage 1
- Polihali Basin and PWAC ESIA's
- Engineering Designs
- Hydropower further feasibility studies underway



More than 30 years of successful collaboration

CONSTRUCTION CONTRACTS ON OFFER

Roads and Bridges:

- PNEAR
- PWAR
- NAR Rehabilitation
- Major Bridges
 - Senqu 600m x 120m
 - Khubelu 150m
- Feeder Roads and Pedestrian Bridges

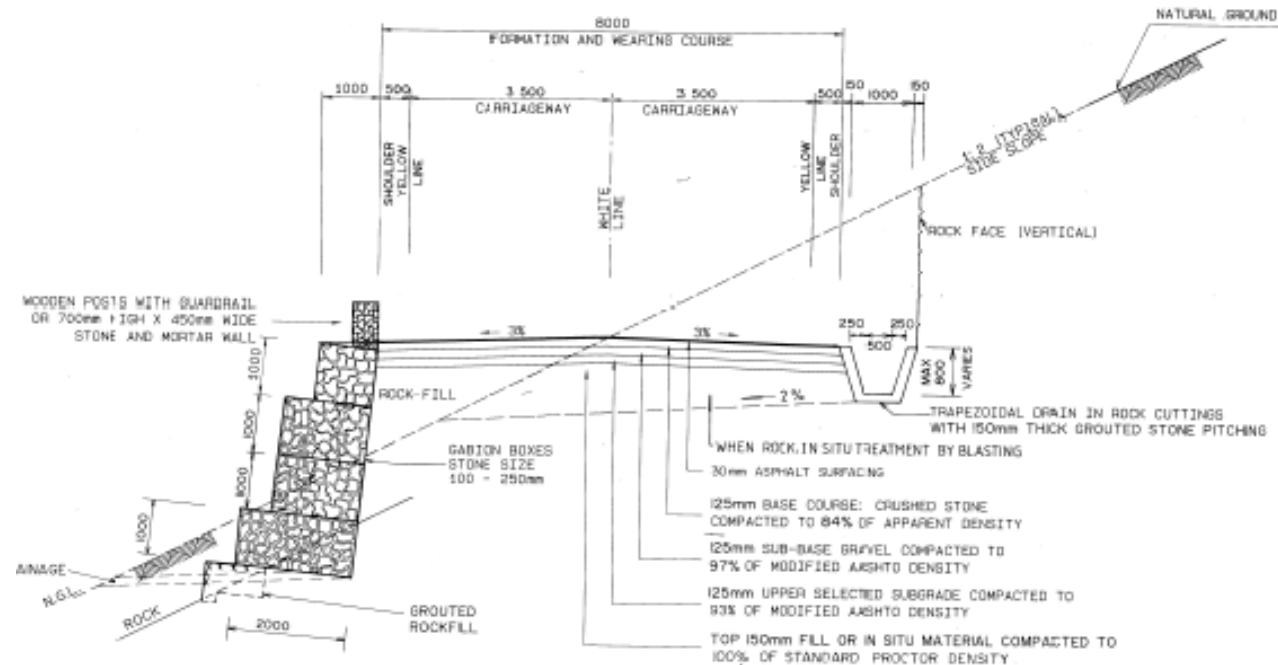


More than 30 years of successful collaboration



PNEAR

- 16km Class A Road
- Improved Drainage and Geometric Alignment
- 6km new alignment above FSL
- Slope Stabilisation

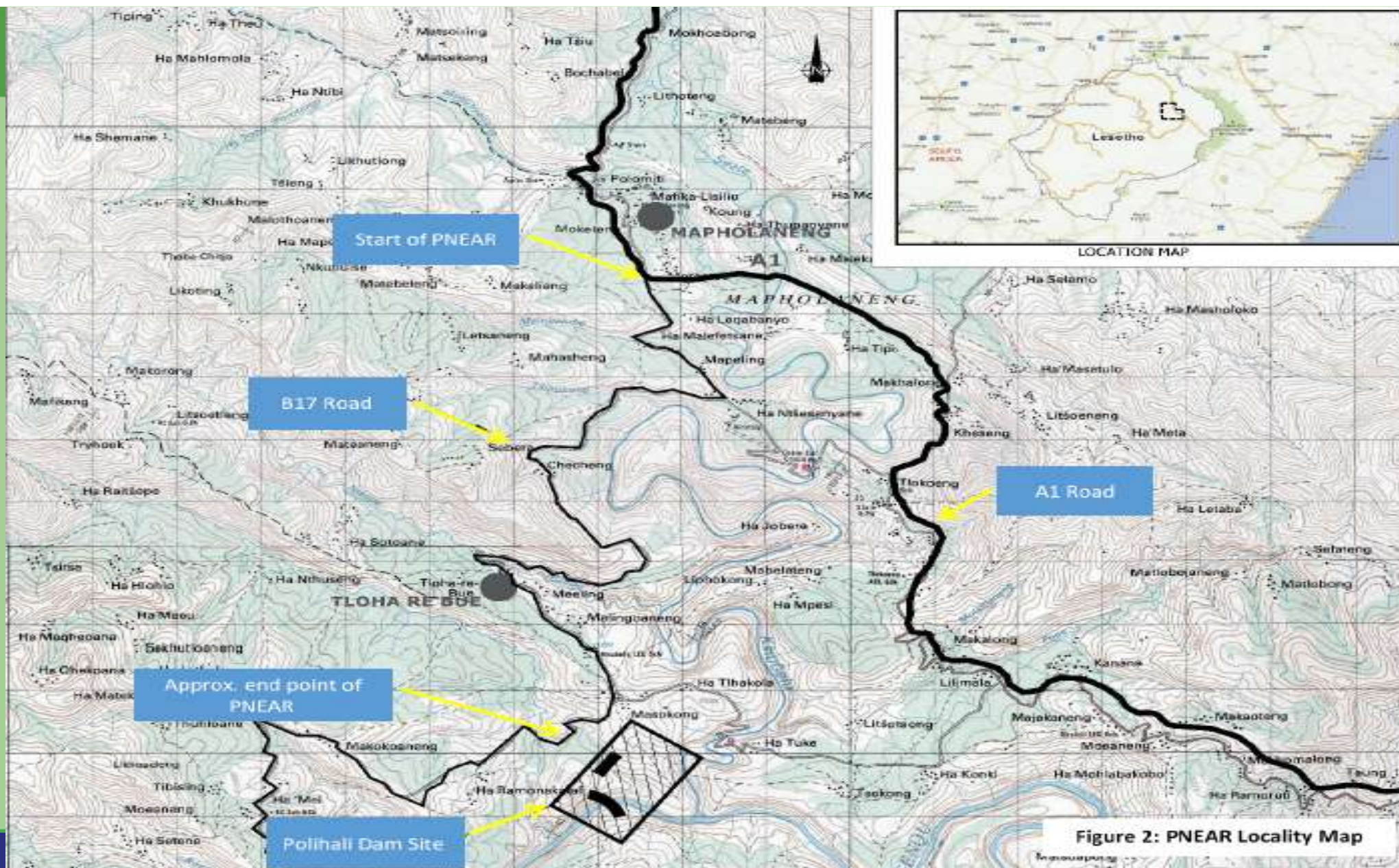


TYPICAL SECTION IN MOUNTAINOUS TERRAIN

(GROUND SLOPE STEEPER THAN 1:4)
SCALE 1:50

More than 30 years of successful collaboration

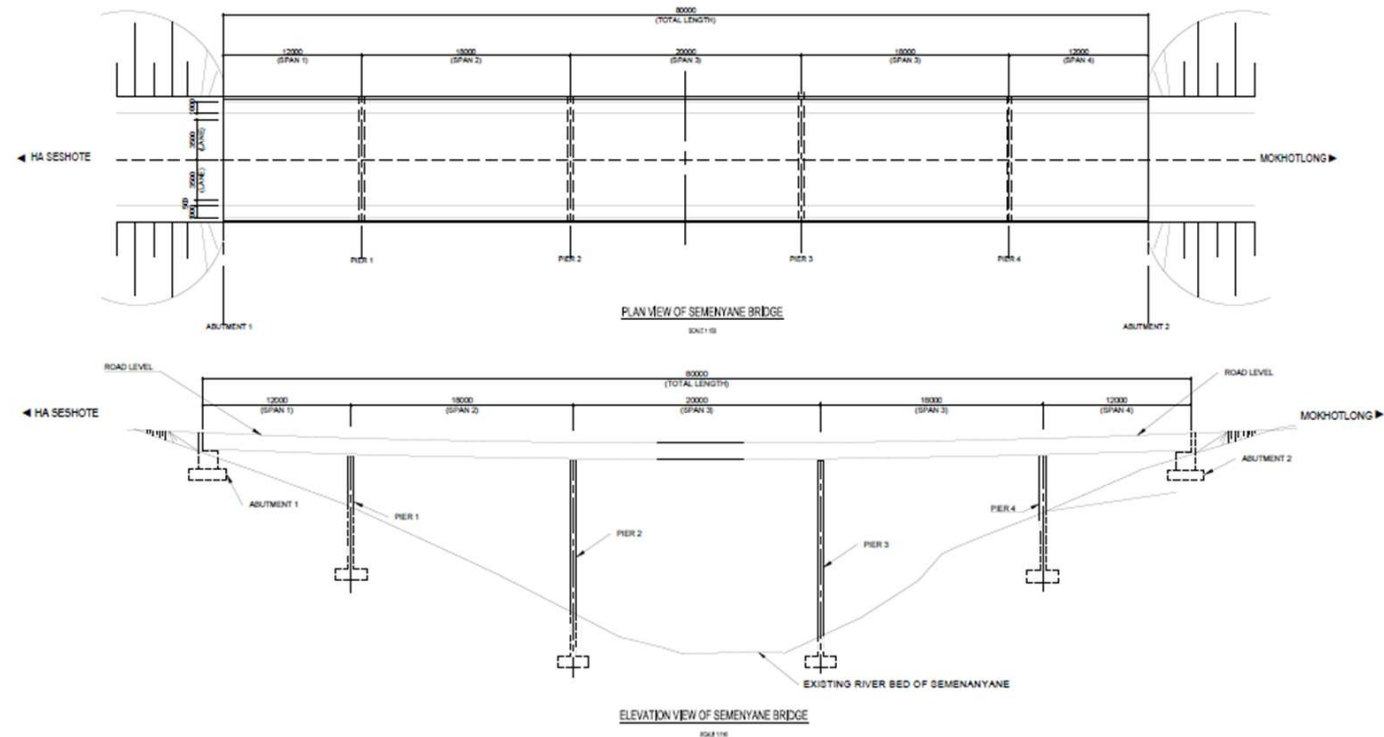






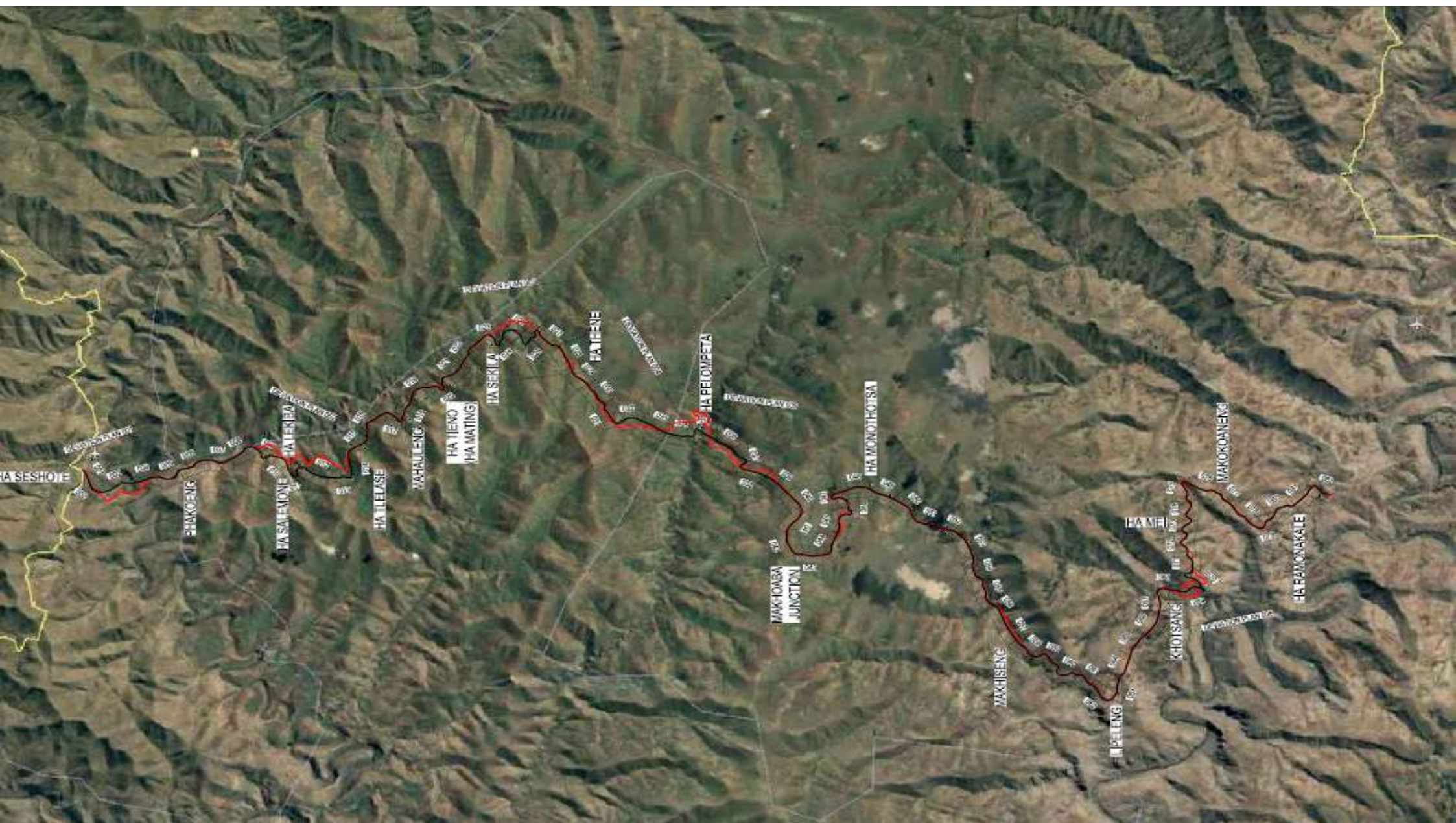
PWAR

- 55km Class A Road
- Ha Seshote to Polihali
- 3 Bridges 60-80m spans
- Mountainous Terrain
- 2 Contracts intersect at Mokhoaba Junction
- 20 months construction



More than 30 years of successful collaboration





Feeder Roads and Bridges

- Master Plan to determine E&SI
- Potentially 150km Class B Road
- Pedestrian Bridges
- Major Bridges at Senqu Crossing and Khubela Crossing



More than 30 years of successful collaboration

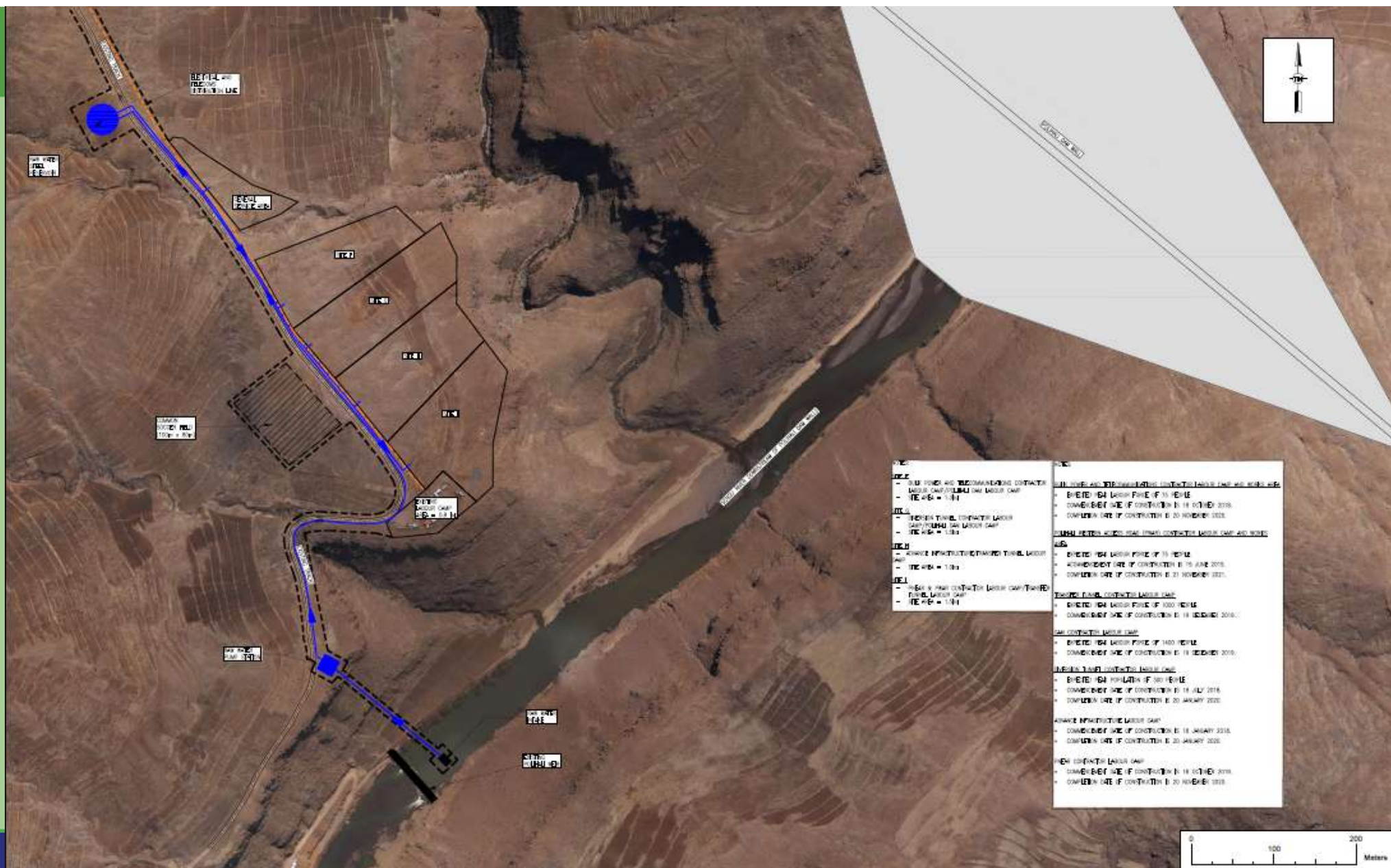


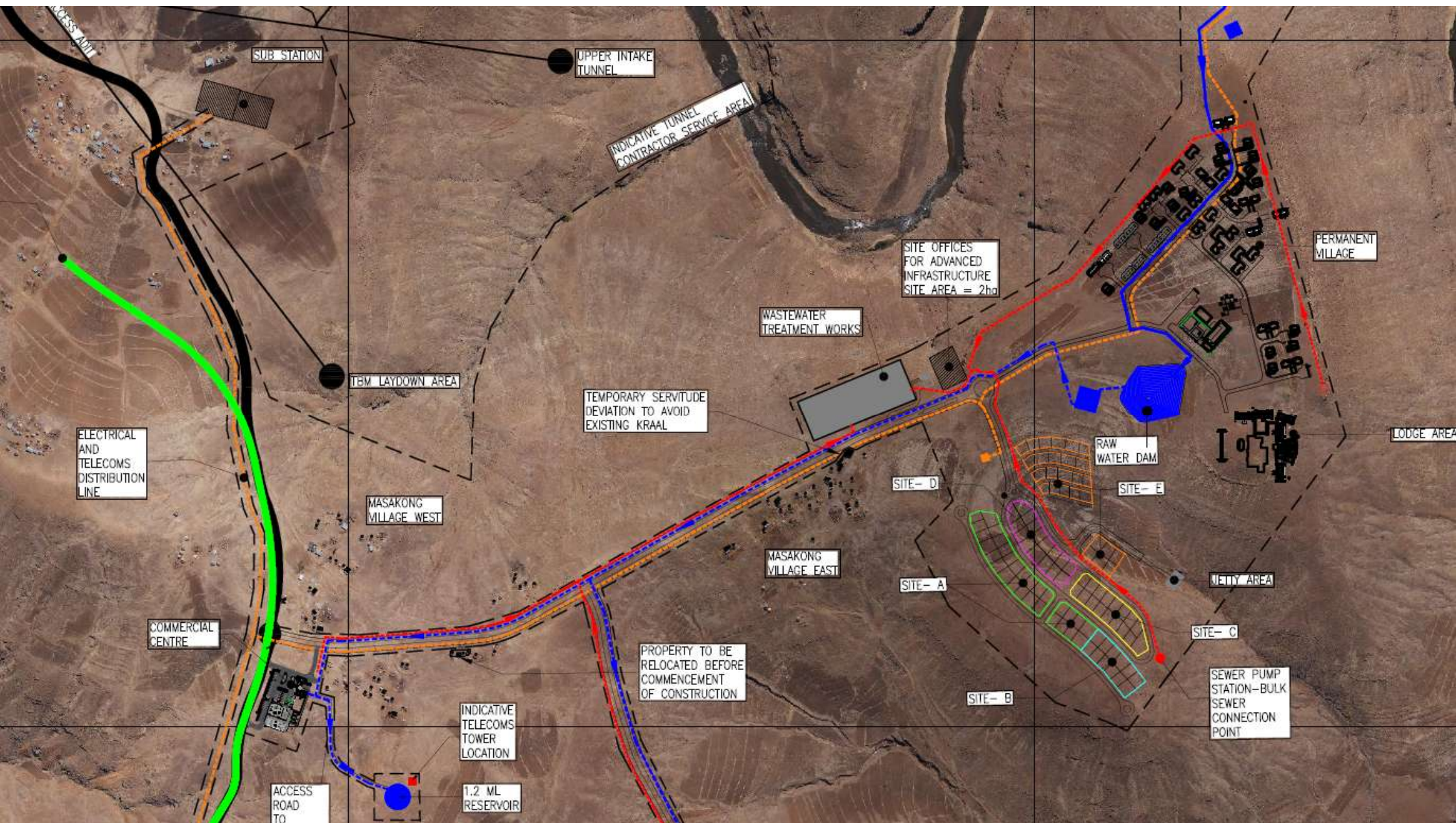


CONSTRUCTION CONTRACTS ON OFFER

- Bulk powerlines and telecommunications
- Project housing and associated infrastructure
- Resettlement of Communities
- Ancillary public service facilities

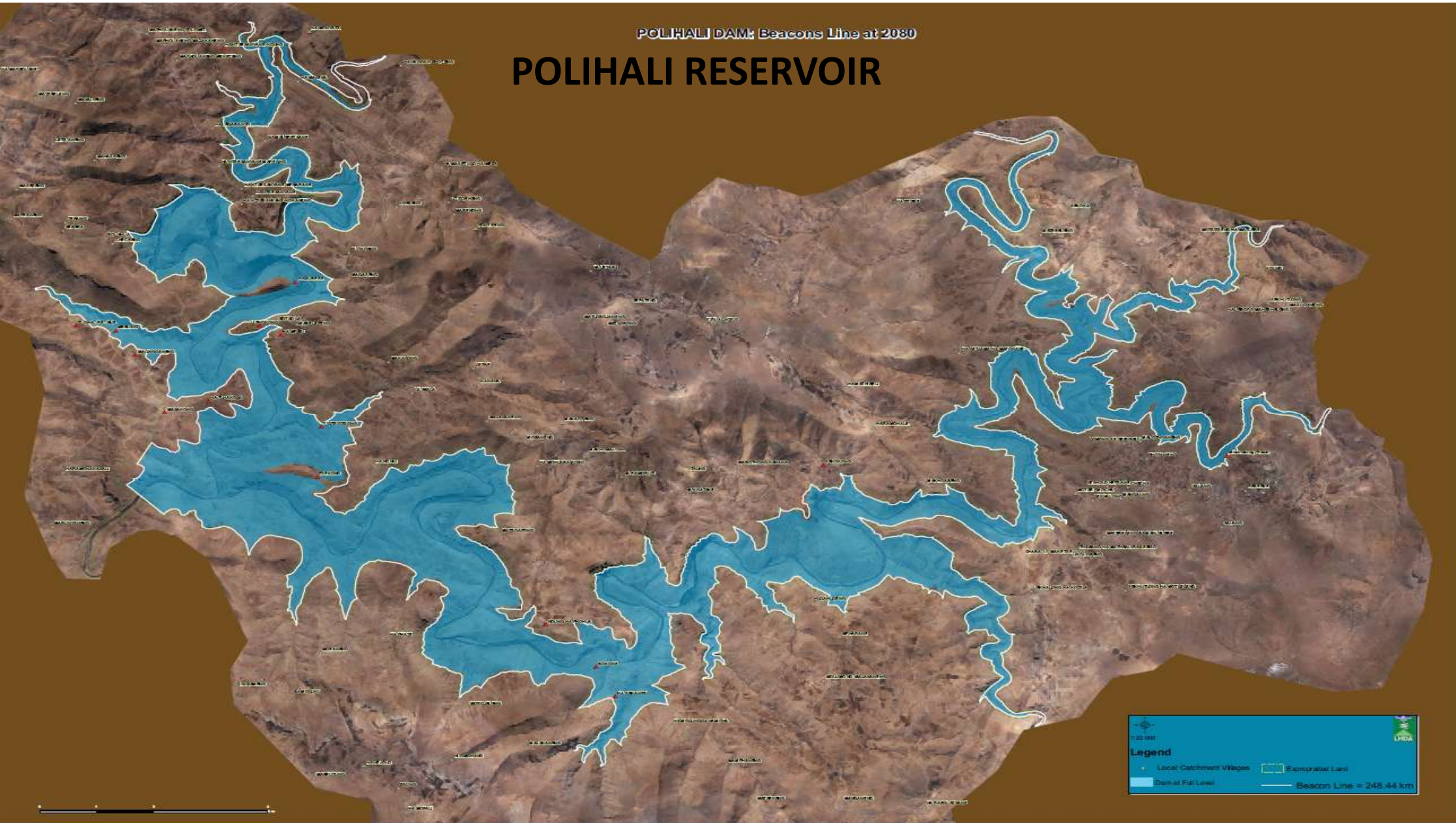






POLIHALI DAM: Beacons Line at 2080

POLIHALI RESERVOIR



CONSTRUCTION CONTRACTS ON OFFER

Polihali Dam

- 165m high CFRD
- 50m high Saddle Dam
- Side Channel Spillway



CONSTRUCTION CONTRACTS ON OFFER

Transfer Tunnel

- 38km x 5m NB diameter
- Controlled Intake

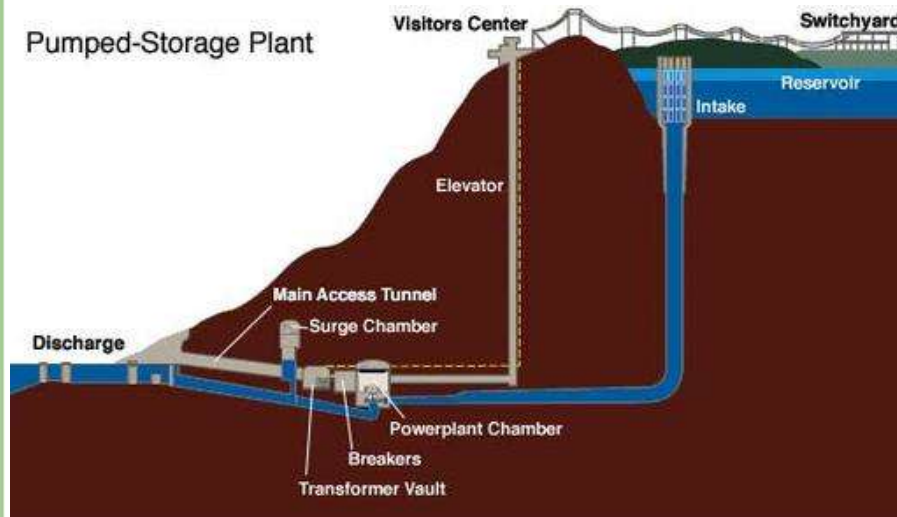
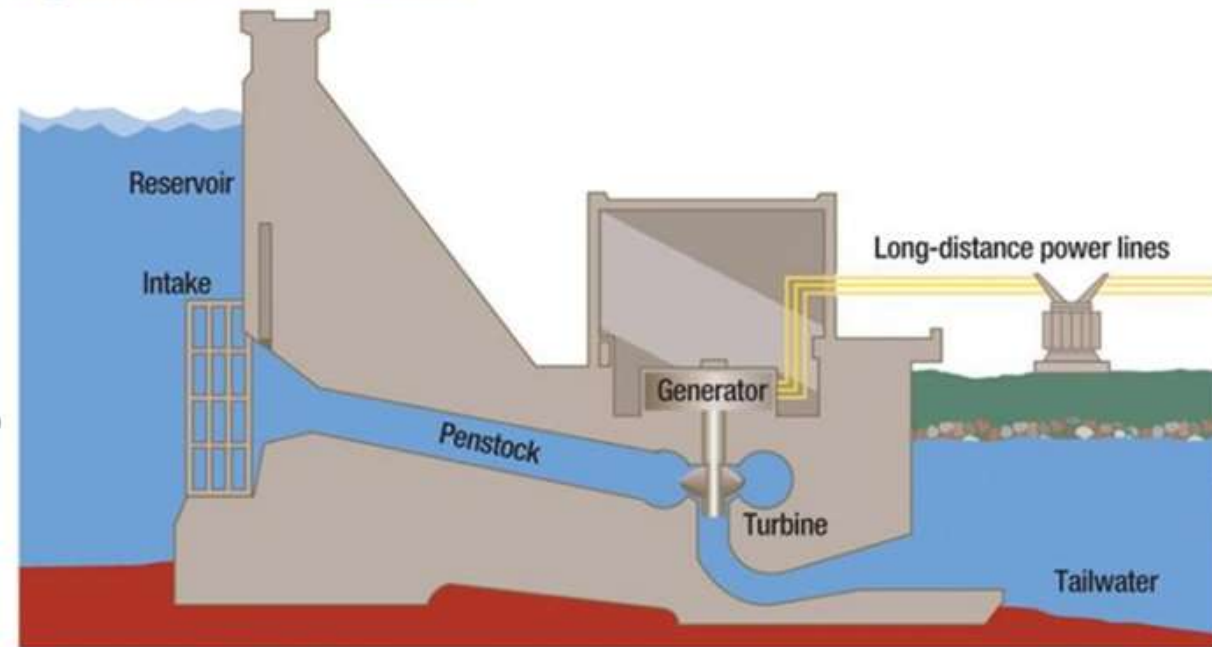


CONSTRUCTION CONTRACTS ON OFFER

Hydropower Generation

- Bankable Feasible Project from Further Studies

Hydroelectric Dam



More than 30 years of successful collaboration



Lesotho Highlands Water Project - Phase II

Karstey ID	Activity Name	Start	Finish
Pollihali Northern Access Road (PNEAR)			
ENG0014-241	Procurement	28-Jul-17	27-Sep-19
CON4012-05	Construction	31-Jan-18	27-Sep-19
Pollihali Western Access Road (PWAR)			
ENG0064-364	Procurement	02-Jan-18	01-Jul-20
CON4017-05	Construction: C4017A - Rehabilitation of Northern Access Road	25-Sep-18	01-Jul-20
CON4017-25	Construction: C4017B - New Access Road (West)	25-Sep-18	01-Jul-20
CON4017-45	Construction: C4017C - New Access Road (East)	25-Sep-18	01-Jul-20
Project Housing and Associated Infrastructure			
ENG009-080	Procurement	06-Aug-17	26-Feb-20
CON4018-006	Construction: 4018A - Services, Platforms and Temporary Housing (East and West)	27-Feb-18	04-Jun-19
CON4018-016	Construction: 4018B - Polihali Village: Housing, Lodge, Recreational and School Facilities	14-Mar-18	26-Feb-20
CON4018-026	Construction: 4018C - Operations and Visitors Centre at Polihali	22-Mar-18	30-Jan-20
CON4018-046	Construction: 4018E - Katse Village: Building Upgrades	22-Mar-18	17-Apr-19
CON4018-036	Construction: 4018D - Commercial Centre at Polihali	29-Mar-18	06-Dec-19
Bulk Power Supply and Telecomms			
ENG008-341f	Procurement	04-Jan-18	29-Jul-20
CON4005-120	Construction: Substations and Bulk Supplies	31-Jul-18	30-Jul-18
CON4005-130	Construction: Transmission Line (Main)	31-Jul-18	15-Jul-20
CON4005-140	Construction: Transmission Line (33kV Tlokoeng)	31-Jul-18	06-May-19
CON4005-095	Construction: Telecommunications	31-Jul-18	29-Jul-20
Pollihali Dam			
ENG006-240	Procurement	07-Feb-19	12-Dec-24
CON4020-005	Construction of Pollihali Dam	18-Dec-19	17-Dec-19
Pollihali Transfer Tunnel			
ENG007-481	Procurement	09-Apr-19	20-Oct-25
CON4021-005	Construction of Pollihali Transfer Tunnel	26-Feb-20	28-Oct-25
Pollihali Diversion Tunnel			
ENG022-325	Procurement	31-Jul-17	15-Jul-19
CON4022-05	Construction of Pollihali Diversion Tunnel	19-Feb-18	15-Jul-19
Major Bridges			
ENG020-335	Procurement - Senqu Bridge	18-Mar-19	29-Mar-23
ENG020-345	Procurement - Khubelu / Mabunyaeng Bridge	29-Apr-19	30-Apr-20
CON4019-05	Construction: Senqu Bridge	20-Mar-20	29-Mar-23
CON4019-11	Construction: Khubelu / Mabunyaeng Bridge	04-May-20	23-May-22
Feeder Roads and Bridges			
ENG005-125	Procurement	02-Feb-21	09-Sep-25
CON400x-05	Construction of Feeder Roads and Bridges	26-Aug-21	09-Sep-25
Ancillary Public Service Facilities			
ENG012-134	Procurement	10-Dec-18	12-Aug-20
CON4015-20	Construction of Public Service Facilities	19-Jul-19	12-Aug-20
Various Resettlement Housing Contracts			
RAP6015-330	Procurement	07-Nov-17	22-Jul-21
RAP6015-350	Construction: Various Resettlement Housing Contracts	01-Aug-18	22-Jul-21

TENDER GUIDELINES

- Advertised in Printed Media and LHDA website
- Respond to ITT – read carefully
- Use templates provided for Submittals
- Quality-based Evaluation – minimum pass or 70%
- Lowest Price not guaranteed to win
- All tenders to be submitted to LHDA, 10th floor, Lesotho Bank Tower
- No late tenders accepted
- Refer to website for more information <http://www.lhda.org.ls/phase2/>

More than 30 years of successful collaboration

