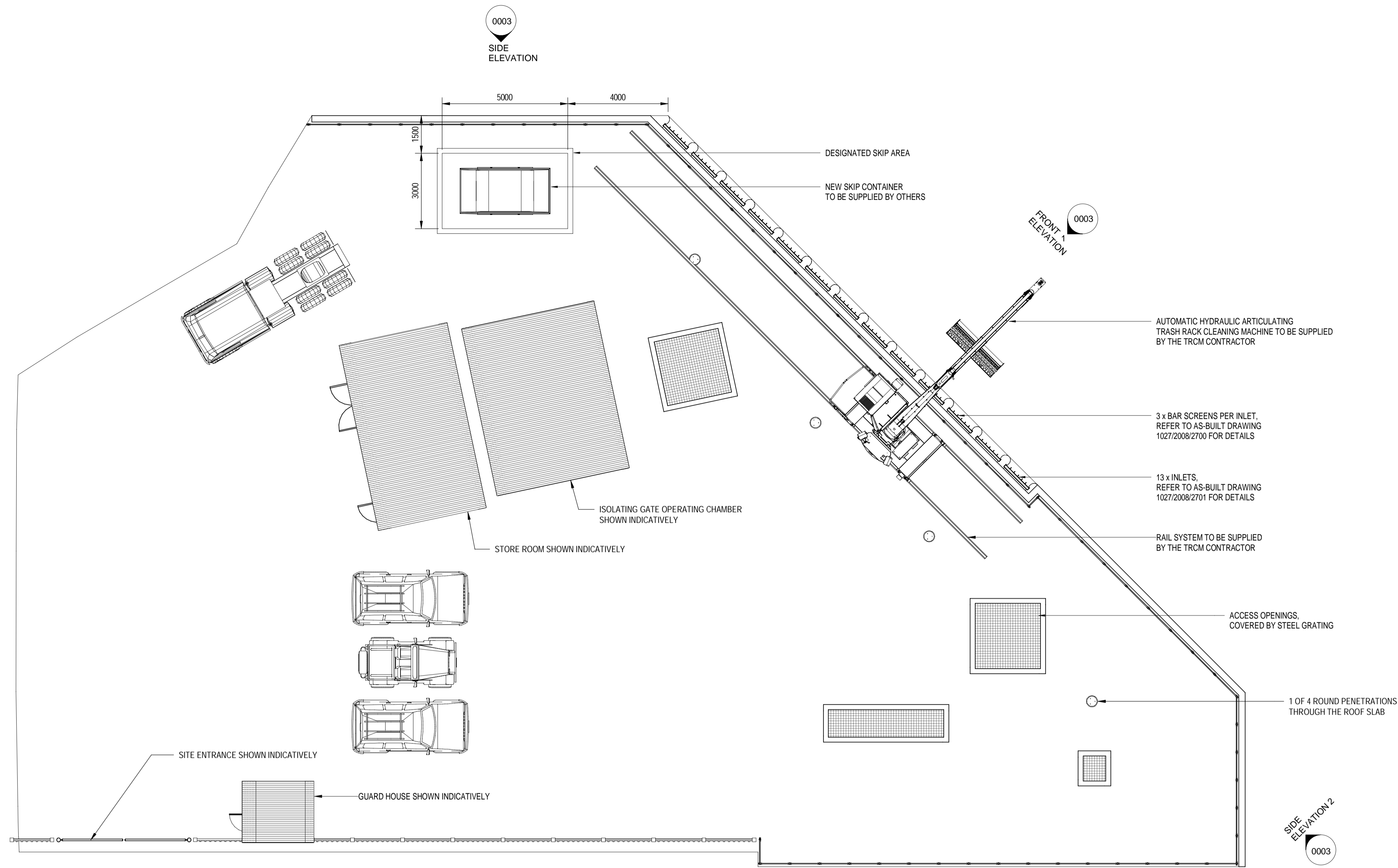
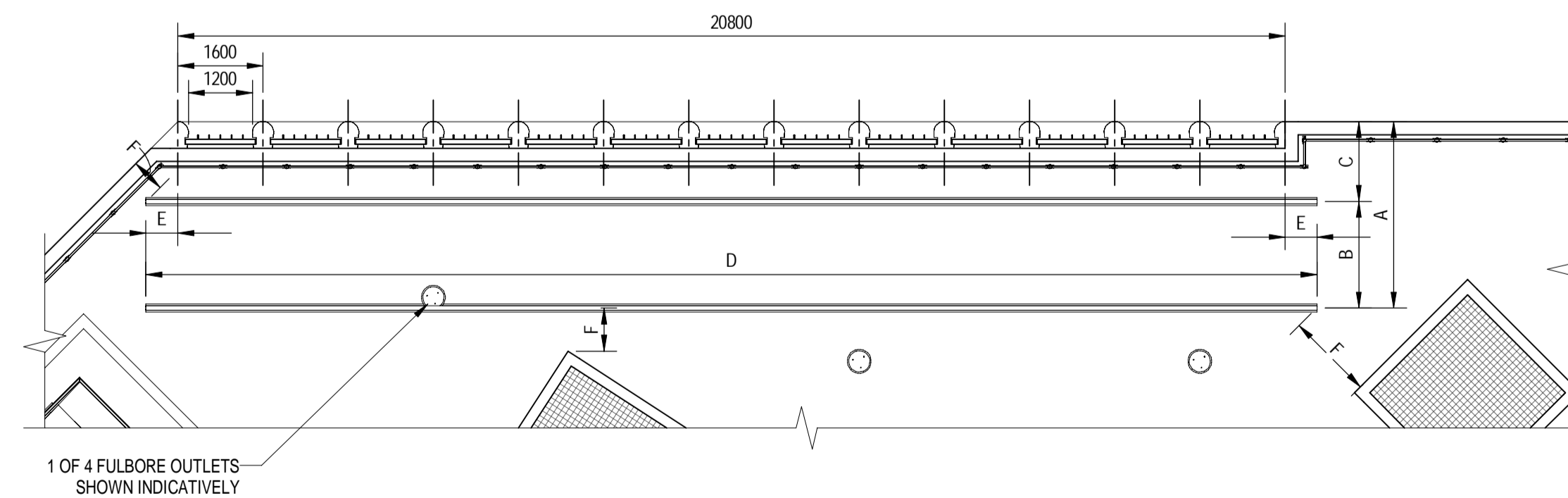


- NOTES:**
- DRAWINGS MUST NOT BE SCALED.
  - ALL CIVIL AND STRUCTURAL WORKS IS INDICATIVE AND SHALL NOT BE MANUFACTURED FROM THIS DRAWING.
  - THE TRCM CONTRACTOR IS RESPONSIBLE FOR THE DESIGN, MANUFACTURING, SHIPPING TO SOUTH AFRICA, COMMISSIONING AND TRAINING FOR THE TRCM. THE TRCM CONTRACTOR SHALL SUBMIT DETAILED DESIGN DRAWINGS TO THE EMPLOYER FOR APPROVAL BEFORE CONSTRUCTION COMMENCES. THE DESIGN MUST BE IN ACCORDANCE WITH THE EMPLOYER'S REQUIREMENTS AND THE PERFORMANCE SPECIFICATIONS.
  - THE CIVIL CONTRACTOR IS RESPONSIBLE FOR THE INSTALLATION OF THE TRASH RACK CLEANING MACHINE INCLUDING THE CIVIL AND STRUCTURAL WORKS.
  - ACCORDING TO THE COPYRIGHT ACT (ACT No 98 OF 1978) NO PART OF THIS DOCUMENT MAY BE REPRODUCED, STORED IN A RETRIEVAL SYSTEM OR TRANSMITTED IN ANY FORM OR BY ANY MEANS WHATSOEVER INCLUDING MECHANICAL, ELECTRONIC, PHOTOCOPIING, MICROFILMING OR ANY OTHER SYSTEM OF INFORMATION STORAGE WITHOUT WRITTEN PERMISSION OF ZUTARI.
  - THE CIVIL CONTRACTOR SHALL SURVEY ALL THE EXISTING STRUCTURE TO CONFIRM LEVELS AND SHALL PROVIDE SURVEY INFORMATION TO THE TRCM CONTRACTOR AND EMPLOYER.
  - ANY DISCREPANCIES BETWEEN THE DRAWINGS, SPECIFICATIONS AND BILL OF QUANTITIES MUST BE REPORTED IMMEDIATELY TO THE EMPLOYER.



**PLAN VIEW**  
SCALE 1 : 100



**RAIL DETAIL**  
SCALE 1 : 100

| RAIL DESIGN CONSTRAINTS |         |         |
|-------------------------|---------|---------|
| PARAMETER               | MINIMUM | MAXIMUM |
| PARAMETER               | [mm]    | [mm]    |
| A                       | N/A     | 3800    |
| B                       | 2000    | 2800    |
| C                       | 1000    | 1500    |
| D                       | N/A     | 22000   |
| E                       | N/A     | 600     |
| F                       | 500     | N/A     |

| TITLE  | DRG No         |
|--|----------------|
| INTAKE - INTAKE SCREEN GUIDES - STEELWORK DETAILS      | 1027/2008/2701 |
| INTAKE - INTAKE SCREENS - STEELWORK DETAILS            | 1027/2008/2700 |
| INTAKE - TYPICAL SECTIONS - SHEET 2 OF 2               | 1027/2008/2308 |
| INTAKE - PARKING AREA - GENERAL LAYOUT & DETAILS       | 1027/2008/2306 |
| INTAKE - SECTIONS - SHEET 2 OF 2                       | 1027/2008/2304 |
| INTAKE - SECTIONS - SHEET 1 OF 2                       | 1027/2008/2303 |
| INTAKE - ELEVATION 2093.500 - PLAN, SECTION AND DETAIL | 1027/2008/2302 |
| INTAKE - ELEVATION 2086.200 - PLAN, SECTION AND DETAIL | 1027/2008/2301 |

**REFERENCES**

|  |  | <p><b>DISCLAIMER</b></p> <p>IF CONSTRUCTION DRAWINGS ARE ISSUED UNSIGNED, THE MASTER WITH THE ORIGINAL SIGNATURE OF APPROVAL WILL BE HELD AT THE ZUTARI OFFICE OF THE APPROVER</p> | <p><b>CLIENT</b></p>                     | <p><b>REV</b></p> <table border="1"> <tr> <th>REV</th> <th>DATE</th> <th>REVISION DETAILS</th> </tr> <tr> <td>A</td> <td>20.09.23</td> <td>FOR INFORMATION</td> </tr> </table> | REV   | DATE                                    | REVISION DETAILS              | A                             | 20.09.23                     | FOR INFORMATION                  | <p><b>APPROVED</b></p> <p>R.v.W.</p> | <p><b>SCALE</b></p> <p>AS SHOWN</p> | <p><b>SIZE</b></p> <p>A1</p> | <p><b>FOR INFORMATION NOT FOR CONSTRUCTION</b></p> | <p><b>PROJECT</b></p> <p>MATSOKU WEIR IMPLEMENTATION OF A TRCM</p> |
|--|--|--|--|--|---|---|-------------------------------|-------------------------------|------------------------------|----------------------------------|--------------------------------------|-------------------------------------|------------------------------|--|--|
|  |  |  | REV                                      | DATE   | REVISION DETAILS                                      |   |                               |                               |                              |                                  |                                      |                                     |                              |  |  |
| A                                      | 20.09.23                               | FOR INFORMATION  |  |  |   |   |                               |                               |                              |                                  |                                      |                                     |                              |  |  |
| <p><b>DESIGNED</b></p> <p>L. GWIJI</p> | <p><b>DESIGNED</b></p> <p>L. GWIJI</p> | <p><b>REVIEWED</b></p> <p>E. LOTTERING</p>   | <p><b>APPROVED</b></p> <p>R. VAN WYK</p> | <p><b>DATE</b></p>   | <p><b>TITLE</b></p> <p>REFERENCE DESIGN PLAN VIEW</p> | <p><b>PROJECT No</b></p> <p>1003061</p> | <p><b>WBS</b></p> <p>1000</p> | <p><b>TYPE</b></p> <p>DRG</p> | <p><b>DISC</b></p> <p>CC</p> | <p><b>NUMBER</b></p> <p>0002</p> | <p><b>REV</b></p> <p>A</p>           |                                     |                              |  |  |

File Path: 2023/09/21 09:14:12  
 Office: C:\Users\Enoch\OneDrive\Zutari\1003061 - Matsoku - Documents\05\DEL156\Drawings\05\Reference Design\Trash Rack\_Cleaner.rvt

